



Hybrid Mini DVR

LIN104M/LIN108M



Quick Installation Guide

COPYRIGHT

All rights reserved. No part of this publication may be reproduced, transmitted, transcribed, stored in a retrieval system, or translated into any language in any form by any means without the written permission of the manufacturer.

TRADEMARKS

All other products or corporate names mentioned in this documentation are for identification and explanation purposes only, and may be trademarks or registered trademarks of their respective owners.

NOTICE

SPECIFICATIONS ARE SUBJECT TO CHANGE WITHOUT PRIOR NOTICE.

THE INFORMATION CONTAINED HEREIN IS TO BE CONSIDERED FOR REFERENCE ONLY.

WARNING

TO REDUCE RISK OF FIRE OR ELECTRIC SHOCK. DO NOT EXPOSE THIS APPLIANCE TO RAIN OR MOISTURE.

WARRANTY VOID FOR ANY UNAUTHORIZED PRODUCT MODIFICATION.

INFORMATION

For more information, please refer to the user manual in the software CD.

Table of Content

| | | |
|------|--|-------------------------------------|
| I. | Package Contents | 1 |
| | 4CH Mini DVR | Error! Bookmark not defined. |
| | 8CH Mini DVR | Error! Bookmark not defined. |
| II. | Hardware Installation | Error! Bookmark not defined. |
| | A. Install the hard disk..... | Error! Bookmark not defined. |
| | B. Device Connection | 2 |
| III. | First Time Using the DVR Unit | 4 |
| IV. | Recording the Live Video | 7 |
| V. | Familiarizing the Buttons in Preview Mode | 8 |
| VI. | Playback Recoded Video | 10 |
| VII. | Familiarizing the Buttons in Playback Mode | 11 |

I. Package Contents

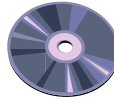


If there is any damage, shortage or inappropriate item in the package contents, please contact with local dealer

■ LIN104M



(1)



(2)



(3)



(4)



(5)

(1) 4CH Mini DVR unit

(2) Software CD (Manual on CD)

(3) Power adaptor

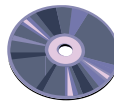
(4) Power Cord (*The power cord may vary according to the local electricity system.)

(5) Remote Control

■ LIN108M



(1)



(2)



(3)



(4)



(5)



(6)

(1) 8CH Mini DVR

(2) Software CD (Manual on CD)

(3) DVI video cable

(4) Power adaptor

(5) Power Cord (*The power cord may vary according to the local electricity system.)

(6) Remote Control

II.

A. Device Connection



Pen drive and external hard disk must be FAT32 format.



All connected devices have their own power supply are necessary.

■ 4CH Mini DVR

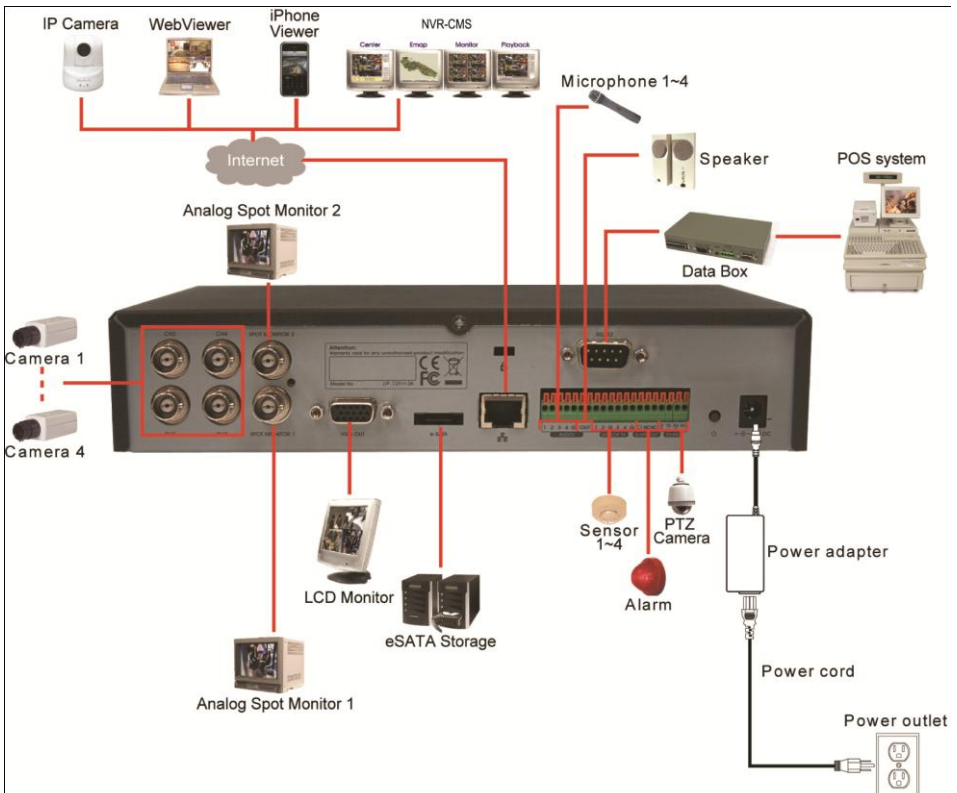


- 4CH Mini DVR supports both Analog and IP camera in 4 channels.
- 1.3 M with H.264/MPEG4/ MJPEG on the first 4 channels and 2.3M with MJPEG on the 1st channel for IP cam connection.

The back panel of the 4CH Mini DVR user can connect up to 4 cameras in combination of analog and IP camera (4CH Mini DVR supports both analog and IP camera in 4 channels.). The DVR unit also can connect 4 sensor devices, 1 alarm devices, and output video to a LCD monitor.

Follow the illustration below to make the connection:

Model 1



■ 8CH Mini DVR

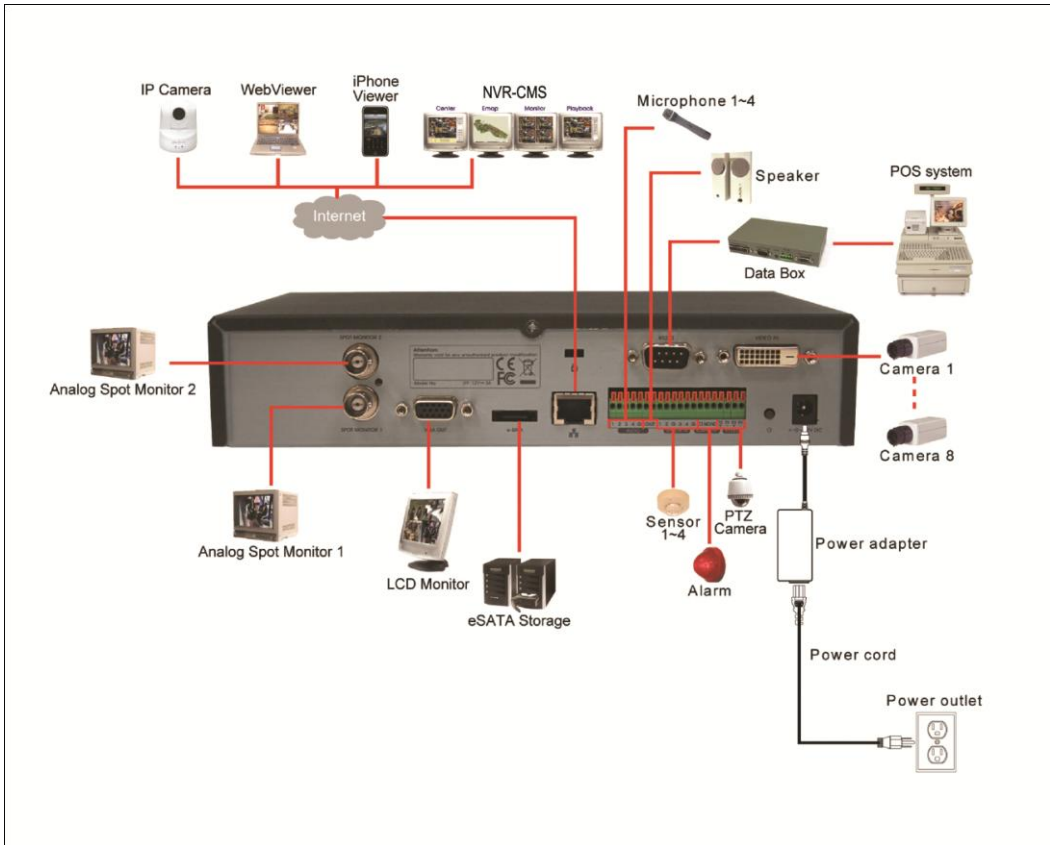


- 8CH Mini DVR only supports first 4 channels for IP camera connection.
- 1.3 M with H.264/MPEG4/ MJPEG on the first 4 channels and 2.3M with MJPEG on the 1st channel for IP cam connection.

The back panel of the 8CH Mini DVR user can connect up to 8 cameras in combination of analog and IP camera (8CH Mini DVR only support first 4 channels for IP camera connection). The DVR unit also can connect 4 sensor devices, 1 alarm devices, and output video to a LCD monitor.

Follow the illustration below to make the connection:

Model 1



III. First Time Using the DVR Unit

1. Connect the mouse to DVR unit (through USB port).
2. Connect all necessary external devices.



DVR unit doesn't supply the power to connected external devices.

3. Plug the power to turn on the DVR unit.
4. Please wait for a while until start up process is completed. And then, the preview screen will show up on surveillance screen.



5. **Adjust time and date:** Setup the DVR system date and time in order to have correct recording time and date. Following the below steps to setup date and time:
 - a. Click **Setup** and enter the password (If this is the first time, enter the default password "**admin**". The default ID will be "**admin**").
 - b. Select **System**.
 - c. In **Date and Time Setting**, click **Setting** button of **System Date and Time**.
 - d. Select the Year and Month by click arrow button, click on the date to select the date. And adjust the time, and then, click **OK**.
6. **Connecting the cameras:** DVR supports IP and Analog camera.
 - **Analog camera**
 - a. Plug the video cable which included in package contents to audio port on DVR unit.
 - b. Connect the analog camera video cable to video-in port.
 - c. Click **Setup** → **Camera**
 - d. Select camera channel and mark **Enable** to enable the channel.
 - e. Select **Input** as Analog Camera.

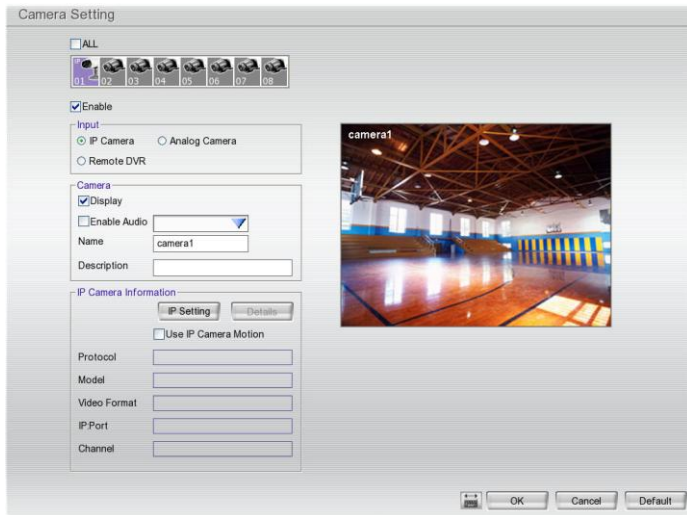
- f. In **Camera** section, mark **Display** to allow the live video of camera to display on surveillance screen. And then, select the channel for **Enable Audio** and enter the **Name** and **Description** of the channel.
- g. Adjust the bright, contrast, hue, and saturation of the camera.
- h. Click **OK**.

■ IP camera

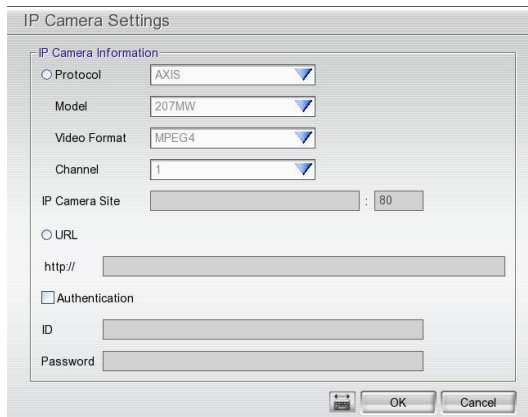


- 8CH Mini DVR only supports first 4 channels (CH1~4) for IP camera.
- 4CH Mini DVR supports both analog and IP camera in 4 channels.
- 1.3 M with H.264/MPEG4/ MJPEG on the first 4 channels and 2.3M with MJPEG on the 1st channel for IP cam connection.

a. Click **Setup** → **Camera**.



- b. Select camera channel (1~4) and mark **Enable** to enable the channel.
- c. Select **Input** as IP Camera.
- d. In **Camera** section, mark **Display** to allow the live video of camera to display on surveillance screen. And then, enter the **Name** and **Description** of the channel.
- e. In **Camera Information** section, click **IP Setting** for detail setting.



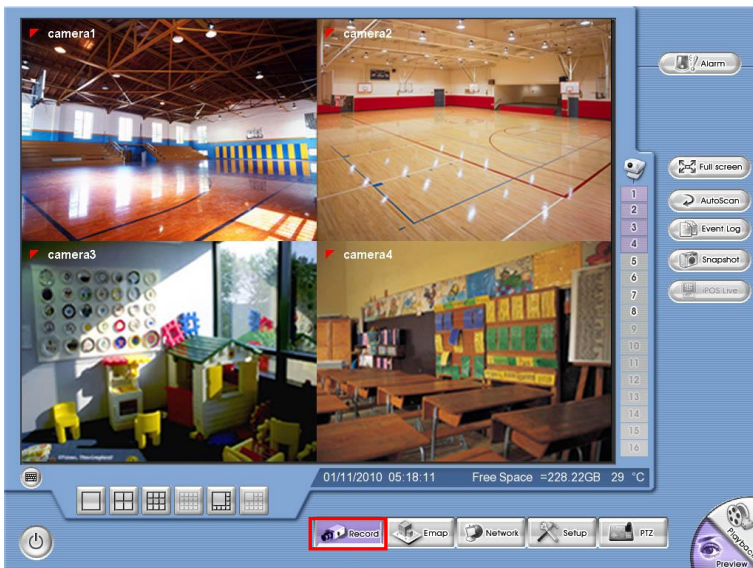
- f. In IP Camera Setting window, click **Protocol**, and then, select **Protocol**, **Mode**, and **Video Format**.

- g. Enter IP address in **IP Camera site** column or enter the **URL** of IP camera.
- h. Enable **Authentication** and enter **ID** and **password** if IP camera's access authority is required.
- i. Click **OK** to save the setting.
- j. When the IP camera has connected, user should see the camera information of **Protocol, Model, Video Format, IP port, and Channel**.
- k. To connect another IP camera, follow the above steps.

IV. Recording the Live Video


While monitoring, user can click **Record** () button to save the live video on hard disk and recorded video can playback in local site.

To stop recording, press **Record** button again and enter the authentication password.



V. Familiarizing the Buttons in Preview Mode



| Name | Function |
|---|---|
| (1) Logout | <ul style="list-style-type: none"> - Reboot: To restart the DVR system. It is required to enter the password - Power Off: To shut down the DVR system. It is required to enter the password - Login: Using different ID to login to DVR system. - Cancel: To return to DVR application. |
| <div data-bbox="373 950 834 1101" data-label="Image"> </div> | |
| (2) Split Screen Mode | Select from 4 different split screen types to view all the camera, or one camera over the other or alongside on a single screen. It also allows you to switch and view different camera number. |
|  | <ul style="list-style-type: none"> - When you are in single screen mode, Right click and Drag a square on the area you want to enlarge. Right-click on screen again, the screen view will back to normal view. - When you are in full screen mode, partial enlarges does not support. |
| (3) Record | Start/stop video recording. |
| (4) EMap | Display the map in each area, and the location of camera/ sensor/ relay and the warning. |
| (5) Network | Enable/disable remote system access. This feature allows you to access DVR server from a remote location via internet connection. The default is disabled. |

| Name | Function |
|-----------------|---|
| (6) Setup | Configure the system settings. |
| (7) PTZ | Access PTZ control panel. |
| (8) Preview | Switch to Preview mode. This allows you to view live camera display. |
| (9) Playback | Switch to Playback mode. This allows you to view the recorded video file. |
| (10) Status bar | Display the current date, time, hard disk free space and temperature of unit. |
| (11) Camera ID | Show the number of cameras that are being viewed. When you are in single screen mode, click the camera ID number to switch and view other camera. |
| (12) Snapshot | Capture and save the screen shot in *.jpg format. |



Please plug the USB pen drive to DVR server before press **Snapshot** button.

| | |
|------------------|--|
| (13) Event log | Show the record of activities that take place in the system. |
| (14) AutoScan | Start/Stop video screen cycle switch. |
| (15) Full screen | View in full screen. To return, press the right button of the mouse or ESC on the keyboard or click the arrow icon. |



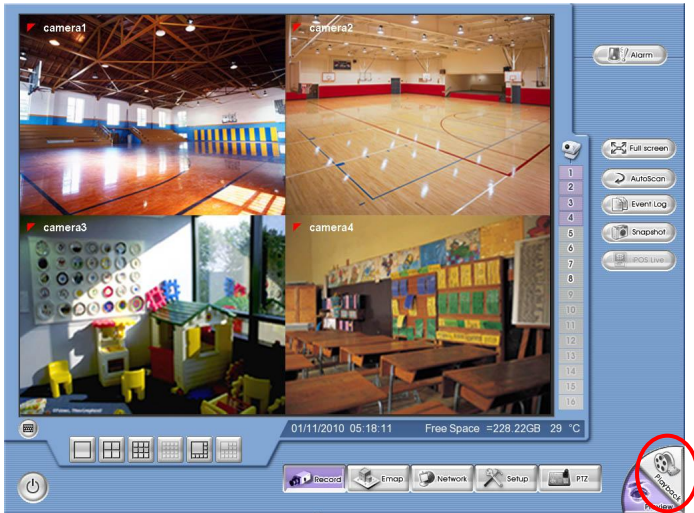
Click to exit from full screen mode

When you switch to full screen in multiple-screen mode, **Left** click to toggle to only display one of the video in the multiple-screen mode or all.

| | |
|-----------------------|-----------------------------------|
| (16) Alarm | Alert and display warning info. |
| (17) Virtual Keyboard | Click to enable virtual keyboard. |

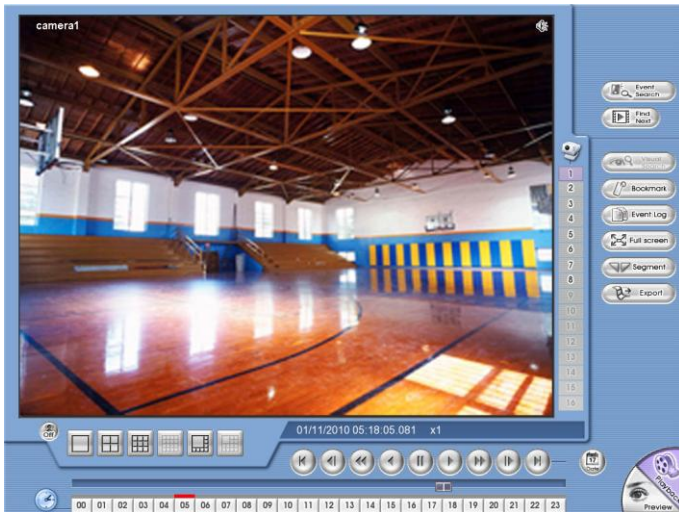
VI. Playback Recorded Video

1. In preview mode, click the **Playback** button.



Preview Mode

2. In Time and Date Selection window, select the date and time to playback. The numbers from 00 to 23 represent the time in 24-hour clock. The numbers from 01 to 08 represent the camera ID. The blue colored column indicates that there is a recorded video file on that period of time. While the red colored column indicates on where to start playing the recorded video file.
3. After selected the date and time, click **OK** to start playback. User will see the selected video file playback on the screen.





Playback Mode

VII. Familiarizing the Buttons in Playback Mode

To switch in Playback mode, click **Playback** button at the lower right corner of Preview mode.



| Name | Function |
|--|---|
| (1) Split Screen Mode | Select from 4 different split screen type to playback the recorded video file of all the camera, or one camera over the other or alongside on a single screen. |
| (2) Progress bar | Show the progress of the file being played. You may move the bar to seek at any location of the track. |
| (3) Hour Buttons | Select and click to playback the recorded video file on the specific time frame. |
|  The Hour buttons represent the time in 24-hour clock. The blue bar on top of the hour button indicates that there is a recorded video file on that period of time. While the red bar indicates that you are currently viewing the recorded video file. | |
| (4) Playback Control Buttons | <p>Begin: Move at the beginning of the recorded video file.</p> <p>Previous: Go back to the previous frame.</p> <p>Slower: Play the recorded video file at the reduce speed from 64x, 32x, 16x, 8x, 4x, 2x, 1x, 1/2X, 1/4X.</p> <p>Rewind: Wind back the recorded video file.</p> <p>Pause: Briefly stop playing the recorded video file.</p> <p>Play: Play the recorded video file.</p> <p>Faster: Play the recorded video file at the speed of 2x, 4x, 8x, 16x, 32x or 64x.</p> <p>Next: Go to the next frame.</p> <p>End: Go to the end of the recorded video file.</p> |

| Name | Function |
|---|--|
| (5) Date | Select the date on the calendar and the time from 00 to 23 to where to start playing the recorded video file. |
|  | <p>The numbers from 00 to 23 represent the time in 24-hour clock. The numbers from 01 to 08 represent the camera ID. The blue colored column indicates that there is a recorded video file on that period of time. While the red colored column indicates on where to start playing the recorded video file.</p> |
| (6) Preview | Switch to Preview mode. |
| (7) Playback | Switch to Playback mode to view the recorded video file. |
| (8) Status bar | Display the recorded date, time and play speed. |
| (9) Camera ID | Show the number of cameras that are being viewed. When you are in single screen mode, click the camera ID number to switch and view other camera. |
| (10) Export | <p>Export includes Snapshot, Output Video Clip, and Backup function.</p> <ul style="list-style-type: none"> ■ Snapshot: Capture and save the screen shot in *.jpg format. ■ Output Video Clip: Save the segmented file in *.dvr format to external USB storage device. ■ Backup: Save the playback file to USB device or DVD disk |
| (11) Segment | <p>Keep a portion of the recorded video.</p> <ol style="list-style-type: none"> 1. Use the Playback Control buttons or drag the bar on the playback progress bar and pause on where you want to start the cut. Then, click Segment to set the begin mark. 2. Use the Playback Control buttons or drag the bar on the playback progress bar and pause on where you want to end the cut. Then, click Segment to set the end mark. To cancel segmentation or set the segment marks from the start, click Segment button again. 3. Click Export button → Output Video Clip to save the video segment to the USB storage device. |
| (12) Full screen | <p>View in full screen. To return, press the right button of the mouse or ESC on the keyboard or click the arrow icon.</p> <p>When you switch to full screen in multiple-screen mode, Left click to toggle to only display one of the video in the multiple-screen mode or all.</p> |
| (13) Event log | Show the record of activities that take place in the system. To filter the records, select and click the option button to only display Event, System, Operation, Network or All. |
| (14) Bookmark | <p>Mark a reference point when reviewing the recorded video file to which you may return for later reference.</p> <ol style="list-style-type: none"> 1. Click Bookmark button 2. In the Bookmark dialog box, you may do the following: <ul style="list-style-type: none"> - Add to create the new reference mark in the bookmark list. - Edit to change the mark description. - Delete to remove the selected reference mark in the list. - Delete All to remove all the reference marks in the list. - Exit to close Bookmark dialog box. 3. Select and click one in the bookmark list to review the file. |
| (15) Find Next | Search for the next event or changes in the motion detector frame. You can use this when you are using Event Search function. |

| Name | Function |
|-------------------|---|
| (16) Event Search | Search from the recorded activities that were recorded in event log (i.e., Sensor, Motion, Video Loss). |
| (17) De-interlace | To enhance the video quality. Set the de-interlace mode to #1, if you are capturing motionless picture and #2, if it captures lots of movement. |