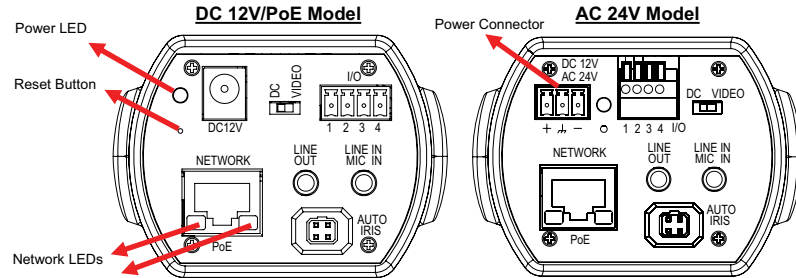


1.3 Megapixel IP Camera Quick Guide

The quick guide is for quick installing and connecting the IP Camera. For details, please refer to the IP Camera's user manual.

Camera Rear Panel



Definition	Remarks
Power LED	Power connection indication (green light).
Reset button	Reset to factory default
DC 12V connector	Power connection
AC 24V/DC 12V connector (AC 24V Model)	+ AC 24V: Power-1 DC 12V: Power
	⏏ AC 24V: Earth GND DC 12V: Reserved
	- AC 24V: Power-2 DC 12V: GND
VIDEO/DC	Video Drive/DC Drive lens selection
I/O	Alarm connection
LINE OUT & LINE IN / MIC IN	Two-way audio transmission
AUTO IRIS	Auto iris lens connector
NETWORK (with PoE Option)	RJ-45 connector
Network LEDs	Network connection and activity indication

Lens Mounting

If use C-Mount lens, after removing the camera's plastic cover, users need to mount the supplied C/CS mount adapter to the camera. Then attach the lens onto the C/CS mount adapter.

IP Camera Installation

Please follow the instructions below to complete IP Camera installation.

Ethernet Cable Connection

Connect one end of the CAT5 Ethernet cable to the RJ-45 connector of the IP Camera, and the other end of the cable to the network switch or PC.



NOTE: In some cases, you may need to use an Ethernet crossover cable when connecting the IP Camera directly to the PC.



NOTE: Check the status of the link indicator and activity indicator LEDs; if the LEDs are unlit, please check LAN connection.



Green Link Light indicates good network connection.

Orange Activity Light flashes for network activity indication.

Power up the Camera

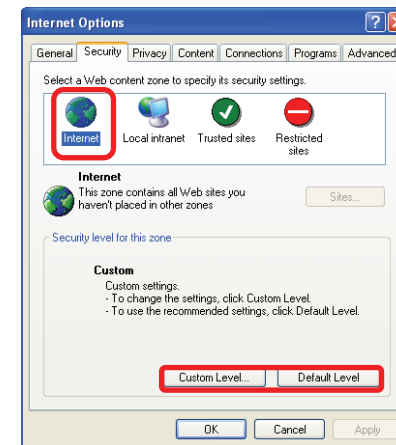


NOTE: For wiring of the DC 12V/AC 24V/PoE camera with the equipped power cable, insert the wires of the cable into the corresponding pins of the power terminal block. If using PoE, make sure Power Sourcing Equipment (PSE) is in use in the network.

Before Login to the IP Camera

A client program will be automatically installed on your PC when connecting to the IP Camera. Before logging in to the IP Camera, please ensure downloading the ActiveX control is allowed by either changing the ActiveX controls and plug-ins or setting Internet's security level to default. For further details, please refer to the IP Camera's user manual.

ActiveX Controls and Plug-ins Settings	Internet Security Level
Step 1: Start the Internet Explorer (IE). Step 2: Select <Tools> from the main menu of the browser. Then Click <Internet Options>. Step 3: Click the <Security> tab and select "Internet", and click <Custom level> to change ActiveX settings. Step 4: Set "ActiveX controls and plug-ins" items to <Prompt> or <Enable>.	Step 1: Start the IE. Step 2: Select <Tools> from the main menu of the browser. Then Click <Internet Options>. Step 3: Click the <Security> tab and select "Internet." Step 4: Down the page, press "Default Level" and click "OK" to confirm the setting. Close the browser window, and open a new one later for accessing the IP Camera



IP Camera Login

The IP Camera's default IP address is: **192.168.0.250**. Therefore, to access the IP Camera for the first time, set the PC's IP address as: 192.168.0.XXX; for example:

IP Address: 192.168.0.100

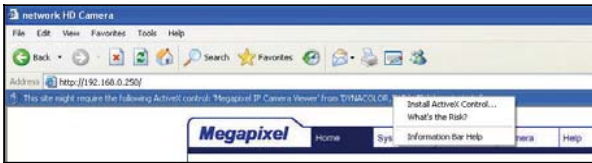
Subnet Mask: 255.255.255.0

Login ID & Password

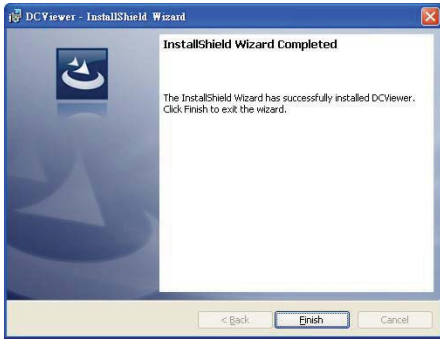
- Key in the IP Camera's IP address in the URL bar of the Web browser window and press "Enter."
- Enter the default user name (**Admin**) and password (**1234**) in the prompt request dialogue. Note that user name is case sensitive.

Install the ActiveX Control

- After connecting to the IP Camera, the request for installing the ActiveX control will appear just below the URL bar.
- Right Click on the information bar, and press "Install ActiveX Control..." to permit ActiveX control installation.



- In the pop-up security warning window, click "Install" to start downloading DC Viewer software on the PC.
- Press "Finish" after DC Viewer installation is complete.



1.3 Megapixel IP Camera Quick Guide

Ver2.1

Browser-based Viewer

The main page of the IP Camera user interface is shown as the figure below.

