

H.264 Advanced DSP Solution

DIGITAL VIDEO RECORDER



MAIN FEATURES

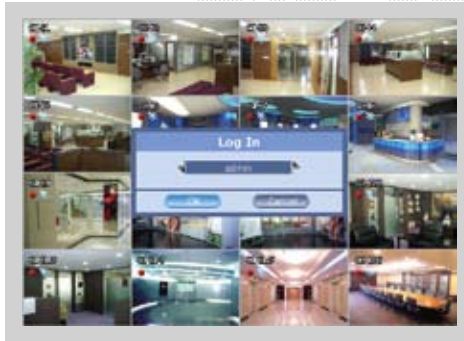
- Full Graphic User Interface (Multiple language support)
 - SATA support
 - Full Graphic Scheduler
 - Pre and Post Alarm & Motion Recording
 - **INDIVIDUAL Channel Recording Setup (Resolution, Frame rates and Quality)**

 - P/T/Z (Pan/Tilt/Zoom) control
 - External Storage Support (USB 2.0)
 - 4ch Audio Input
 - USB Mouse Compatible
 - **VGA Output with a Deinterlacer**

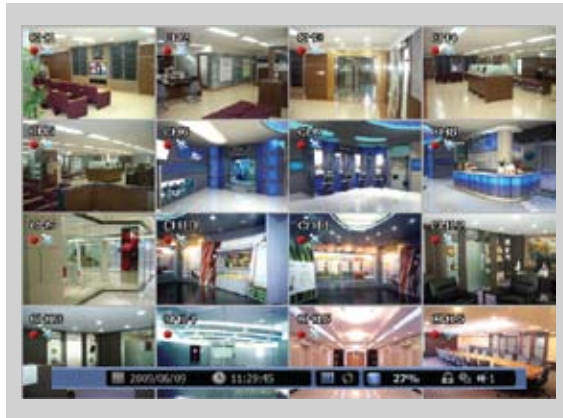
 - Powerful Client Software (Live, Search and Setup)
 - Remote access via internet explorer (Live and Search)
 - DDNS and Multi port support

 - Embedded LINUX OS
 - TI DaVinci DSP
 - High-resolution & high-quality H.264 algorithm
 - Real Pentaplex Operation
 - **Dual Streaming – independent Network Transmission**
-

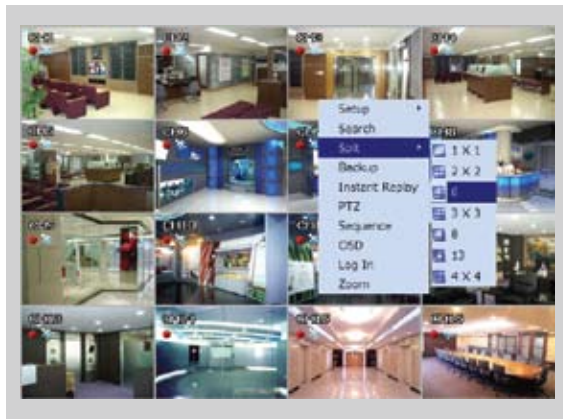
STANDARD SERIES FEATURE



LOGIN
Multi-User Authority Levels
Supports 8 Different Users



LIVE
1,4,6,8,9,13,16 Split Mode
GUI, OSD Toggle
Versatile Time/Date Display
Software De-Interlacer
Covert and Disable Function



MOUSE
USB Mouse Operation
Digital Zoom
Instant Replay

SETUP

Individual Record Setup
Pre and Post Alarm
Auto Deletion (Duration Cap)
Import/Export Configuration
Motion Detection with 352 Zones



STANDARD SERIES FEATURE



SCHEDULER

Weekly Scheduler
Holiday Setup
4 Groups
Up to 10 Minute Increments



SEARCH

1,4,9,16 Split Mode
PIP and Full Screen Mode
Time and Event Mode
Software De-Interlacer
From x1/4 to x64



BACKUP

USB 2.0 Interface
Executable File Format
Built-in File Player



CLIENT S/W

Dual Streaming for Network
Interactive Setup
PTZ Control
64ch Favorite Function



H.264 Advanced DSP Solution

DIGITAL VIDEO RECORDER

SPECIFICATION

Model		H.264 STANDARD SERIES			
		STANDARD-4	STANDARD-8	STANDARD-16	
Video	Camera input (NTSC, PAL)	4 BNC	8 BNC	16 BNC	
	Output	1 BNC and 1 VGA, selectable	1 BNC / 1 VGA	1 BNC / 1 VGA	
Audio	Audio input	4 RCA			
	Output	1 RCA			
Sensor	Sensor In/Alarm out	1(NC, NO selectable) / 1(Relay Output)			
OS	Operating System	Embedded Linux OS			
Display	Speed	Real Time			
	Resolution (Pixel)	720 X 480(NTSC), 720 X 576(PAL)			
	Split screen	1,4 Programmable Sequence	1,4,6,8,9 Programmable Sequence	1,4,6,8,9,13,16 Programmable Sequence	
Recording	Compression	H.264 (DSP)			
	Resolution (Pixel)	720x480, 720 x240, 360 x 240 (NTSC) / 720x576, 720 x 288, 360 x 288(PAL)			
	Picture quality	4 Steps (Super, High, Medium, Low)			
	Speed	Total	NTSC	123 frames based on CIF	127 frames based on CIF
PAL			103 frames based on CIF	107 frames based on CIF	115 frames based on CIF
Playback	Display	1,4	1,4,8	1,4,8,16	
	Search mode	Calendar, Event			
	Speed	Normal, REW & FF [recorded speed x2, x4, x8, x16,x32,x64,x1/2,x1/4], Frame to frame, Pause			
Network	Network Interface	Ethernet, PPPoE			
	Protocol	TCP/IP, HTTP, DHCP			
	Application	Windows 2000 / XP / Vista (PC Client & IE)			
	Web Browser	Internet Explorer			
Backup	Interface	USB 2.0 X 2			
	Backup device	Network, USB Flash Drive			
HDD	Supports up to 2 SATA HDDs(One is default, Second is optional) – No Capacity limit				
Function	<ul style="list-style-type: none"> •Full GUI with Alpha Blending •Individual Setting of Resolution, Frame Rates and Picture Quality •Instant Replay •Digital Zoom •Mouse Control •Weekly Scheduler with Holiday by up to 10 Minute Increments •Covert and Disable Function of Cameras •Motion Detection with 352 Area Setting •Relay Alarm Output 		<ul style="list-style-type: none"> •PTZ control by RS-485 •Daylight Saving Time and Network Time Setting •Multi User Authority up to 8 Users •Software Deinterlacer upon Live and Playback •12 Languages Supported for the GUI •Individual Network Port Setting •Auto Deletion (Limit Days of Recording) •Import and Export the Configuration Settings •Dual Streaming for Independent Video Transmission •Interactive Setup Via Network 		
	Others	Power Consumption	60W		
	Operating Temperature	5 ~40℃(41~104F)			
	Relative Humidity	Maximum 80% non-condensing			
	Dimension	340(W) X250(D)X60(H)			



Distributed by